



**WARNING:** This product can expose you to chemicals including lead, which is known to the State of California to cause cancer and birth defects or other reproductive harm. For more information, go to [www.P65Warnings.ca.gov](http://www.P65Warnings.ca.gov).

**Electric Eel®**

**Toll-Free 1-800-833-1212**

**ELECTRIC EEL MANUFACTURING CO., INC.**  
 501 W. Leffel Lane • Springfield, Ohio 45506  
 937-323-4644 • Fax: 937-323-3767  
 E-mail: [info@electriceel.com](mailto:info@electriceel.com)  
 Website: [www.electriceel.com](http://www.electriceel.com)

**Electric Eel**  
**CAM ace 100-micro**  
**PIPELINE INSPECTION SYSTEM**  
**USER MANUAL**



**Electric Eel®**

**Toll-Free 1-800-833-1212**

**ELECTRIC EEL MANUFACTURING CO., INC.**  
 501 W. Leffel Lane • Springfield, Ohio 45506  
 937-323-4644 • Fax: 937-323-3767  
 E-mail: [info@electriceel.com](mailto:info@electriceel.com)  
 Website: [www.electriceel.com](http://www.electriceel.com)

## PRODUCT FEATURES

With the Electric Eel eCAM Ace 100-Micro you can complete inspections without the use of a traditional monitor and with the ease of a system weighing 15 pounds that runs on battery or AC.



### All eCAM units have a built-in Battery Cradle\* (Battery Not Included)

\*Accepts a Milwaukee M18 battery.  
Allows easy access to power for remote field work or where electricity is not available. Battery life is 6-7 hours.

The Ace 100-Micro sends its own wireless Wi-Fi signal directly to multiple mobile devices or tablets in high-definition video, with the option of audio voice recording overlay, that can then be recorded and saved in your photo folder. The video can be sent back to home base or clients via text, email, airdrop, Facebook, Instagram, cloud, etc.

- Monitor free reel, NO cords, NO heavy monitor cases, NO screens to damage
- Powerful SONDE transmitter that works with any 512Hz locator
- Auto-iris camera element that automatically adjusts picture lighting, no LED light dimming required
- On screen resettable footage counter
- Easy wireless video transfer from reel to any mobile device or tablet, connects up to four Wi-Fi enabled devices at once
- Record in high compressed video, easily manage video files and snapshot pictures, files can be air-dropped, texted, or emailed
- Voice recording overlay to keep you hands free without the need to add text
- Videos and pictures are saved right in your picture app
- Free downloadable Wi-Fi app
- Wi-Fi transmission - supports iPhone, iPad, and Android devices
- Transmission distance with no obstacles is around 75 ft.

## LIMITED WARRANTY INFORMATION

Your Electric Eel product is warranted to be free from defects in workmanship or materials for a period of one year from date of purchase.

### What We Will Do

Upon examination we will, at our option, repair or replace any defective part or product at no extra charge to you during the one year warranty period. If we determine that there are no defects in workmanship or materials, we will inform you of our decision and tell you how much it will cost to repair or replace the product.

### Limitation of Liability

#### What the Warranty Does Not Cover:

Damage to or malfunction of the product due to any cause other than defective workmanship or materials as determined by the Electric Eel Manufacturing Company, Inc. INCIDENTAL AND CONSEQUENTIAL DAMAGES CAUSED BY THE PRODUCT.

THIS WARRANTY IS MADE IN PLACE OF ALL OTHER WARRANTIES, EXPRESS OR IMPLIED, INCLUDING THOSE OF MERCHANTABILITY AND OF FITNESS.

### If You have a Warranty Issue

If you have a warranty issue please contact Electric Eel Manufacturing directly by email: [info@electriceel.com](mailto:info@electriceel.com) or Toll-Free 1(800)833-1212.

### Obtaining Service

If the product requires service, please contact Electric Eel at: <https://www.electriceel.com/pipeline-inspection-repair-centers/> Electric Eel is not responsible for damages or loss incurred in connection with mailing and/or transportation of product.

For more information please visit our website at [www.electriceel.com](http://www.electriceel.com)

## CONNECTING TO WI-FI

1. In the settings menu of your device open Wi-Fi. Connect to the camera by selecting “Hathorn XXXX” in the Wi-Fi list. Note that the XXXX will be replaced by four numbers associated with your specific camera unit.

The default password is: **12345678**

2. Open the app, click “CONNECT” and the camera video should appear on the screen.



## SONDE/COUNTER TRANSMITTER (512Hz)

### Sonde & Locator

Your system includes a SONDE transmitter. It is located in the spring behind the camera. To activate the sonde, press and hold the red sonde button until the symbol appears beside the footage counter on the screen. The sonde will start sending a signal that can be picked up by any standard 512Hz locator/receiver.

### Counter

Push the **RED** button located on the reel hub as shown below. Hold it for 3 seconds and the count will flash, let it go and the counter will reset. Keep holding it for 5 seconds, the sonde will come on and it won't reset the counter. A visual sonde shows on the screen. Hold it for 5 seconds again and it will shut off the sonde.





## INSTALLATION OF APP FOR MOBILE STREAMING

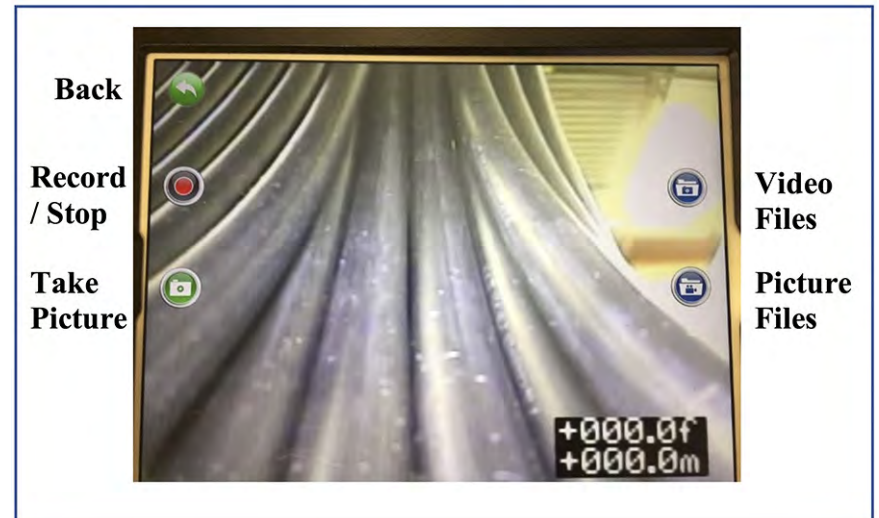
1. Turn on the mobile device terminal and enter APP store for either Apple or Android
2. Search “HATHORN-PRO” (or HATHORN-PRO2” for newer Phones) software and download.
3. Install the APP software



## VIDEO VIEWING

Open the app and click “CONNECT”. If the connection between the camera and the mobile device was successful, the the video will begin playing automatically. If it does not, then repeat the Wi-Fi pairing steps.

All pictures and videos are stored in the photos folder of your device.



## AUDIO RECORDING

Upon pressing “RECORD” for the first time the app will ask you if you wish to record audio. If you do, then push “YES”. The app will then ask to have access to your microphone, click “YES”. You are now recording audio for the entire inspection.

Note: You cannot turn audio recording off and on during inspection. You will need to disconnect Wi-Fi and reconnect.